

PHYSICAL DISTANCING FURNITURE SOLUTIONS

Agile Furniture by VS



STACKABILITY

Gain needed floor space when you are able to stack tables and chairs.



Clear the Room

Stacking tables as high as 8 and chairs as high as 5. Having this agility in your classroom will allow you to easily clean the floors and put away unneeded tables and chairs, allowing more physical distance between students according to recent CDC guidelines.

MOBILITY

Mobile furniture ensures you can quickly expand beyond the classroom.

No Boundaries

Most VS furniture easily fits through a standard 3 foot doorway, so pieces can easily be moved wherever needed.



Enlarge your Learning Space

When you need to turn the entire school into a learning space – including gyms, hallways, foyers – mobile furniture that fits through doorways is a must, allowing you to flow seamlessly into any space.



AGILITY

Furniture that's future-proof and can be rearranged to meet the need at any given moment.

Easy Transitions

Furniture built with constant change in mind, supporting all learning environments – and whatever challenges they need to tackle now, and in the future.



CREATE MOVEMENT

Muscle activity = nourishment for the brain.

Movement is Still Important

Children and teenagers are wired to move; they need to move. With ergonomic furniture in classrooms, students can sit dynamically and experience physical, mental, and developmental benefits, and turn their focus to other important things – like reconnecting.



CLEANABILITY

Easily clean rooms by getting chairs and stools off the floor.

Difference Between Cleaning, Sanitizing, and Disinfecting

Cleaning removes germs, dirt, and impurities from surfaces or objects. Cleaning works by using soap (or detergent) and water to physically remove germs from surfaces. This process does not necessarily kill germs, but by removing them, it lowers their numbers and the risk of spreading infection.

Sanitizing lowers the number of germs on surfaces or objects to a safe level, as judged by public health standards or requirements. This process works by either cleaning or disinfecting surfaces or objects to lower the risk of spreading infection.

Disinfecting works by using chemicals to kill germs on surfaces or objects. This process does not necessarily clean dirty surfaces or remove germs, but by killing germs on a surface after cleaning, it can further lower the risk of spreading infection. Find appropriate products for use against SARS-CoV-2, the virus that causes COVID-19, on the EPA's website here: <https://www.epa.gov/pesticide-registration/list-n-disinfectants-use-against-sars-cov-2>.

Learn more about the CDC guidelines for cleaning and disinfecting facilities at <https://www.cdc.gov/coronavirus/2019-ncov/community/disinfecting-building-facility.html>.

Cleaning and care instructions for VS America's products available at <https://vsamerica.box.com/s/o3v6daf94jg6p29e8p6krnx3heoml1e7>.

Easy Cleaning

Getting furniture off the floor fast means quick and easy cleaning.





2020 QUICKSHIP PROGRAM

When a project requires a short turnaround time, the QuickShip Program will help get products to you faster – in-stock products ship in 10 business days or less.

www.vsamerica.com/quickship

FULLY ASSEMBLED

All QuickShip products arrive fully assembled so they can be put to use immediately.



Quality Control

Fully-assembled furniture means the quality is the same every time – straight from the VS factory.



Less Waste

The way we package furniture – typically loose-loaded – minimizes cardboard waste and is better for the environment.

Immediate Use

Furniture that's delivered in one piece – meaning zero screws to drill – means furniture can be used immediately.

VS AMERICA

Ergonomic furniture that inspires motion and has the agility to adapt to every changing classroom need.

Ergonomic Furniture

- Students need chairs and tables which suit their individual height.
- With ergonomic furniture, students sit dynamically and experience physical, mental, and developmental benefits.
- Physical well-being helps create ideal conditions for authentic learning.

Durability

- VS furniture undergoes extensive testing, ensuring the utmost quality and durability.
- We design safe furniture that weathers rambunctious students and the test of time.

Quality

- VS furniture combines a uniquely distinctive design with resilience and durability.
- Most of our furniture is fully assembled in our manufacturing plant so it's delivered in one piece to the school – ensuring quality control every time.

Sustainability

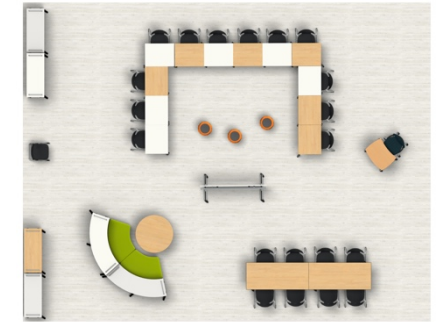
- For VS, sustainable business practice means behaving responsibly towards people, the environment, and society.
- We produce our furniture in an environmentally friendly way, and we are actively committed to greater sustainability.



CLASSROOM LAYOUTS

The following layouts show sample classrooms that can be purchased using the QuickShip program. Included are typical layouts (small group work, seminar), as well as thought starters on how they can be rearranged to create physical distancing for the 2020-2021 school year.

CLASSROOM 1: SEMINAR



SEMINAR

Layout samples shown are for approximately 20-25 students in a 750-800 square foot classroom.



JUMPER AIR ACTIVE
Quantity: 20



LUPOSTOOL
Quantity: 2



SHIFT+ INTERACT
Quantity: 1



RONDOLIFT-KF
Quantity: 1



SHIFT+ TRANSFER BOX
Quantity: 2



SHIFT+ TRANSFER 60°
Quantity: 2



PANTOMOVE-PLUS
Quantity: 1



HOKKI
Quantity: 3



LITETABLE-ST
Quantity: 12



**HEIGHT-ADJUSTABLE
FLIPTABLE**
Quantity: 3

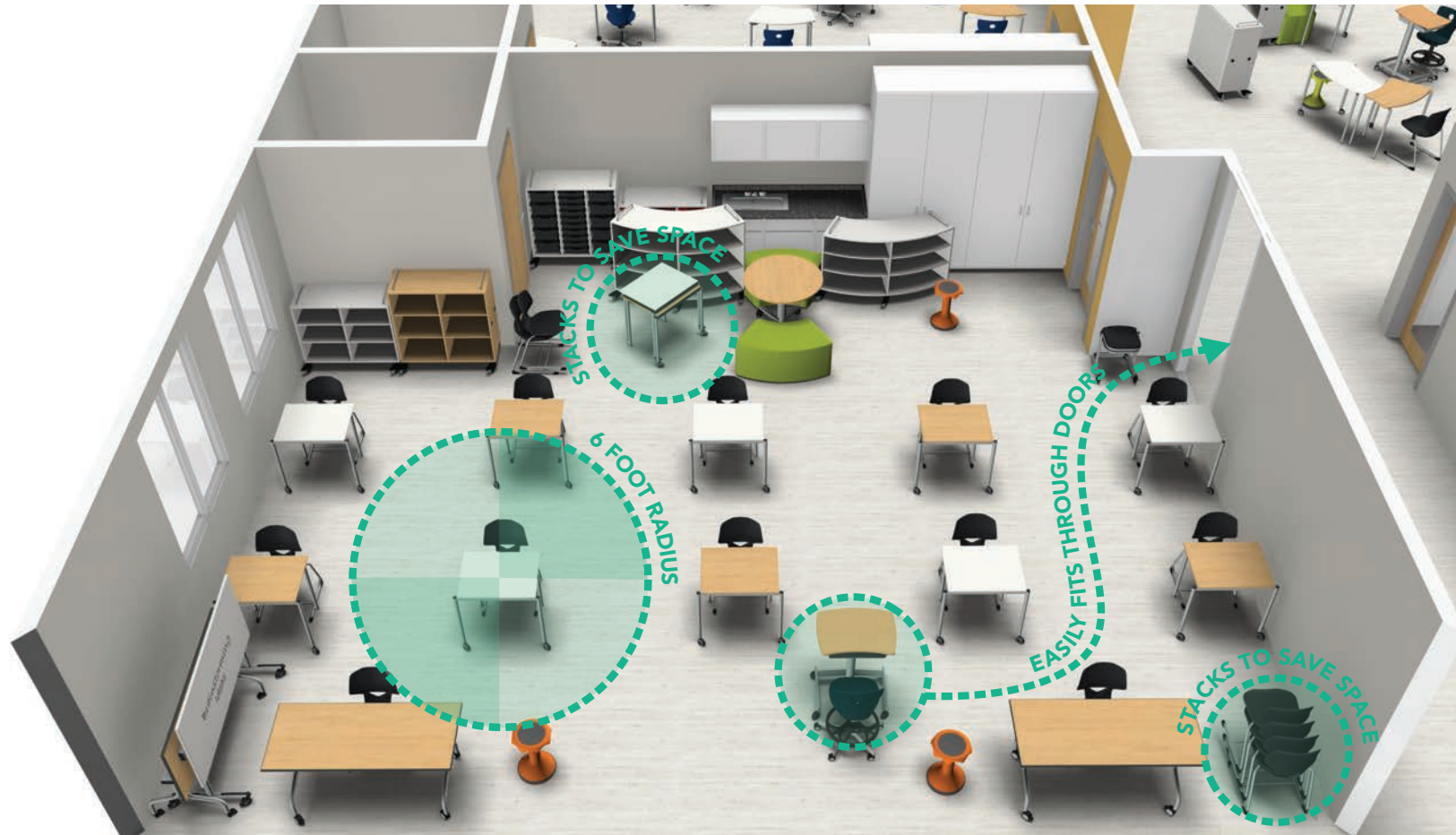


**SHIFT+ TRANSFER
STRAIGHT**
Quantity: 2



SHIFT+ LANDSCAPE
Quantity: 2

CLASSROOM 1 WITH DISTANCING



PHYSICAL DISTANCING



STACKING

JUMPER® Air Active can be stacked up to a height of 5 chairs.



STACKING

LiteTable-ST can be stacked up to 8 tables, depending on model.



FLIPPABLE

FlipTables can be flipped and nested to save space and to easily fit through doors.

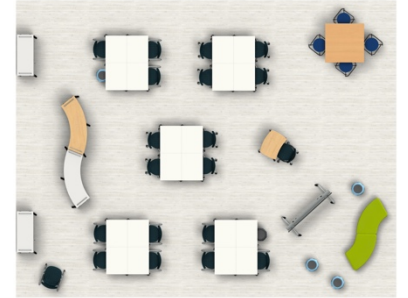


MOBILE

Shift+ Interact easily moves around the room and fits through doors.

CLASSROOM 2: SMALL GROUP WORK

Layout Option A



SMALL GROUP WORK

Layout samples shown are for approximately 20-25 students in a 750-800 square foot classroom.



PANTOSWING
Quantity: 12



PANTOMOVE
Quantity: 8



PANTOMOVE-PLUS
Quantity: 1



SOLO (SPECIAL HEIGHT)
Quantity: 4



HOKKI
Quantity: 5



SHIFT+ INTERACT
Quantity: 1



LITETABLE-ST
Quantity: 20



RONDOLIFT-KF
Quantity: 1



FLIPTABLE-RU
Quantity: 1



SHIFT+ TRANSFER TEACH
Quantity: 2

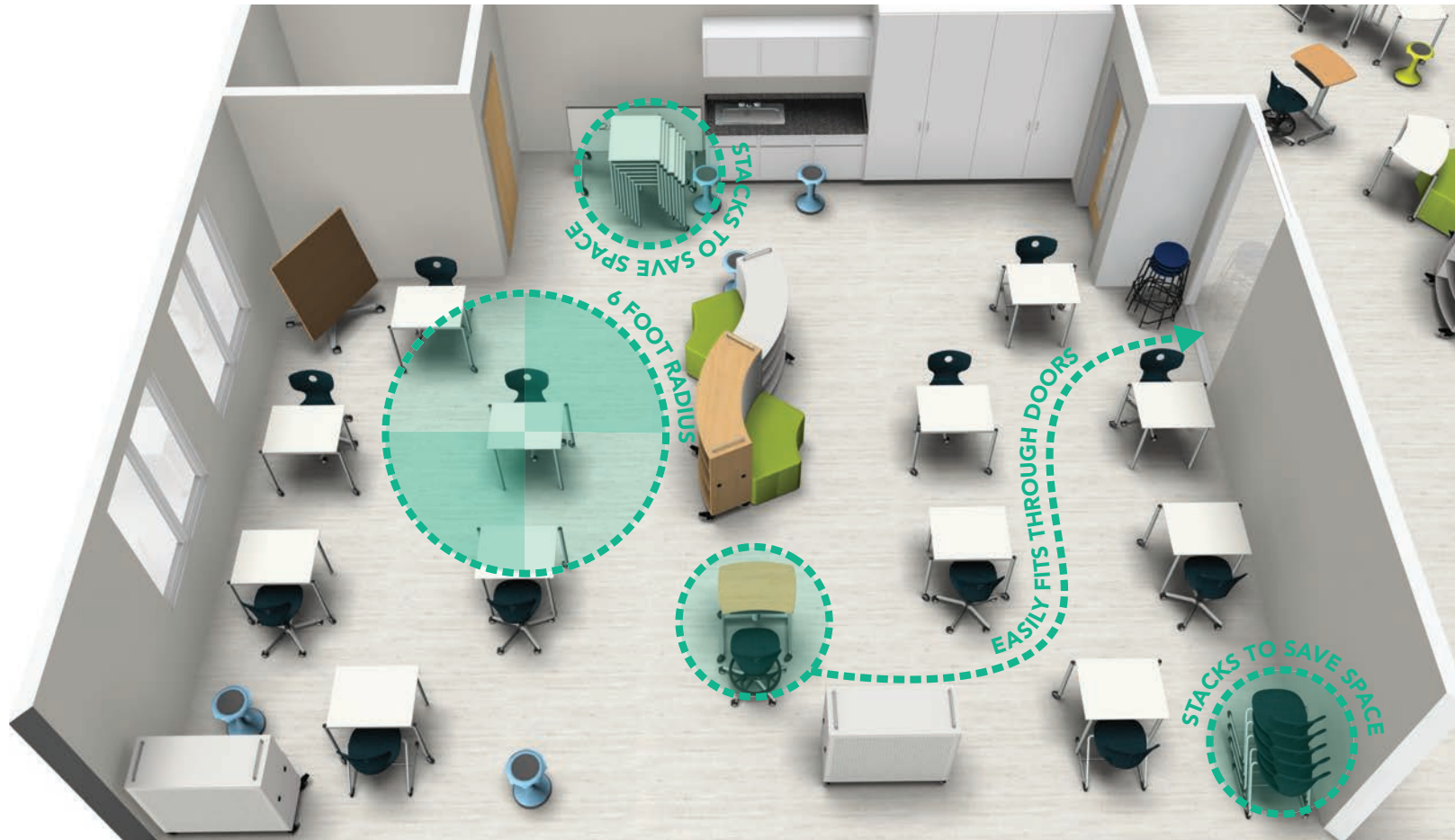


SHIFT+ TRANSFER 60°
Quantity: 2



SHIFT+ LANDSCAPE
Quantity: 2

CLASSROOM 2 WITH DISTANCING



PHYSICAL DISTANCING



STACKING

PantoSwing-LuPo can be stacked up to a height of 4 chairs.



STACKING

LiteTable-ST can be stacked up to 8 tables, depending on model.



MOBILE

Shift+ Interact easily moves around the room and fits through doors.



MOBILE

RondoLift can easily fit through doors thanks to its tilting top.

CLASSROOM 2: SOCRATIC

Layout Option B



SOCRATIC

Layout samples shown are for approximately 20-25 students in a 750-800 square foot classroom.



PANTOSWING
Quantity: 12



PANTOMOVE
Quantity: 8



PANTOMOVE-PLUS
Quantity: 1



SOLO (SPECIAL HEIGHT)
Quantity: 4



HOKKI
Quantity: 5



SHIFT+ INTERACT
Quantity: 1



LITETABLE-ST
Quantity: 20



RONDOLIFT-KF
Quantity: 1



FLIPTABLE-RU
Quantity: 1



SHIFT+ TRANSFER TEACH
Quantity: 2

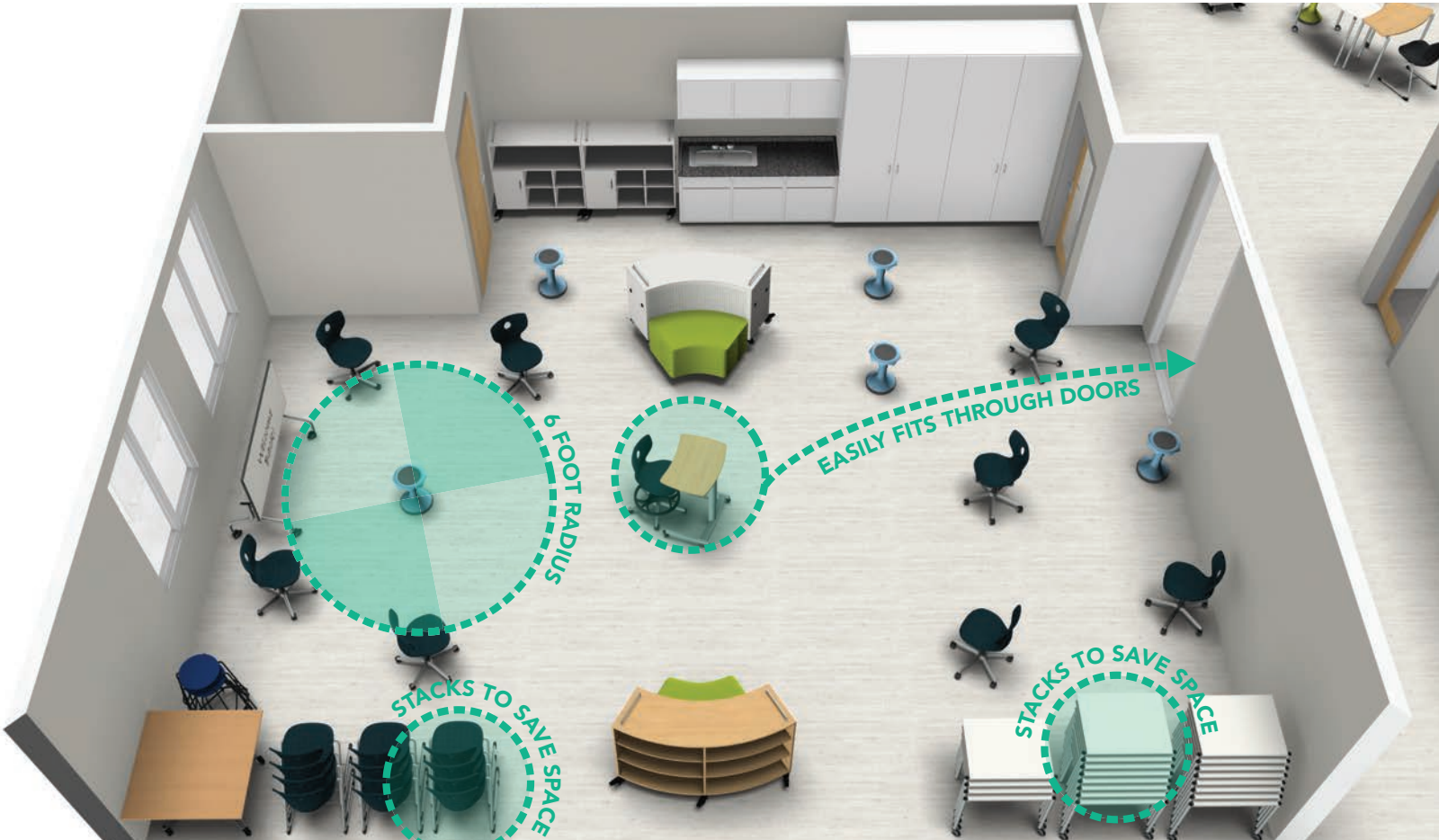


SHIFT+ TRANSFER 60°
Quantity: 2



SHIFT+ LANDSCAPE
Quantity: 2

CLASSROOM 2 WITH DISTANCING



PHYSICAL DISTANCING



CLEANABLE

PantoMove-LuPo comes standard with a piggy back hook so you can suspend it on tables for easy cleaning.



STACKING

LiteTable-ST
can be stacked up to
8 tables, depending
on model.



MOBILE

Shift+ Interact easily
moves around the
room and fits
through doors.

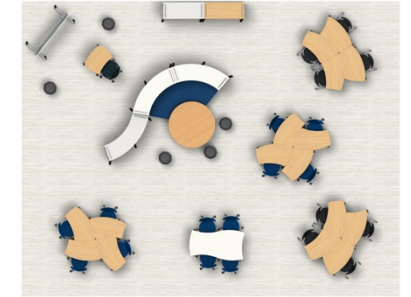


MOBILE

RondoLift can easily fit through doors thanks to its tilting top.

CLASSROOM 3: SMALL GROUP WORK

Layout Option A



SMALL GROUP WORK

Layout samples shown are for approximately 20-25 students in a 750-800 square foot classroom.



JUMPER AIR ACTIVE
Quantity: 8



PANTOMOVE-PLUS
Quantity: 1



SHIFT+ INTERACT
Quantity: 1



RONDOLIFT-KF
Quantity: 1



SHIFT+ TRANSFER BOX
Quantity: 1



SHIFT+ TRANSFER 60°
Quantity: 3



PANTOMOVE
Quantity: 12



HOKKI
Quantity: 5



SHIFT+ THUMBPRINT
Quantity: 16



SHIFT+ FUSIONFLIP
Quantity: 2



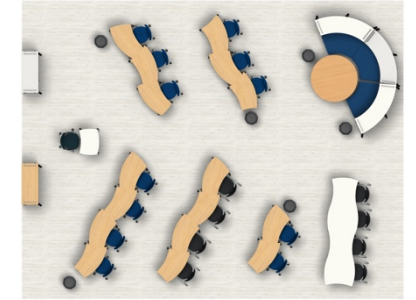
SHIFT+ TRANSFER TEACH
Quantity: 1



SHIFT+ LANDSCAPE
Quantity: 3

CLASSROOM 3: LECTURE

Layout Option B



LECTURE

Layout samples shown are for approximately 20-25 students in a 750-800 square foot classroom.



JUMPER AIR ACTIVE
Quantity: 8



PANTOMOVE-PLUS
Quantity: 1



SHIFT+ INTERACT
Quantity: 1



RONDOLIFT-KF
Quantity: 1



SHIFT+ TRANSFER BOX
Quantity: 1



SHIFT+ TRANSFER 60°
Quantity: 3



PANTOMOVE
Quantity: 12



HOKKI
Quantity: 5



SHIFT+ THUMBPRINT
Quantity: 16



SHIFT+ FUSIONFLIP
Quantity: 2



SHIFT+ TRANSFER TEACH
Quantity: 1



SHIFT+ LANDSCAPE
Quantity: 3

CLASSROOM 3 WITH DISTANCING



PHYSICAL DISTANCING

*Please note: furniture not graded for outdoor use, this is a temporary solution only.



STACKING

PantoSwing-LuPo can be stacked up to a height of 4 chairs.



STACKING

Shift+ ThumbPrint can be stacked up to 6 tables high.



MOBILE

Shift+ Interact easily moves around the room and fits through doors.

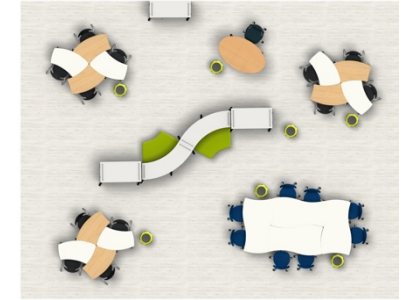


FLIPPABLE

Shift+ FusionFlip can be flipped and nested to save space and to easily fit through doors.

CLASSROOM 4: DIFFERENTIATED ZONES

Layout Option A



DIFFERENTIATED ZONES

Layout samples shown are for approximately 20-25 students in a 750-800 square foot classroom.



JUMPER AIR ACTIVE
Quantity: 12



PANTOMOVE
Quantity: 8



PANTOMOVE-PLUS
Quantity: 1



HOKKI
Quantity: 6



SHIFT+ THUMBPRINT
Quantity: 12



RONDOLIFT-KF
Quantity: 1



SHIFT+ FUSIONFLIP
Quantity: 4



SHIFT+ TRANSFER STRAIGHT 2-SIDED
Quantity: 2



SHIFT+ TRANSFER 60°
Quantity: 2

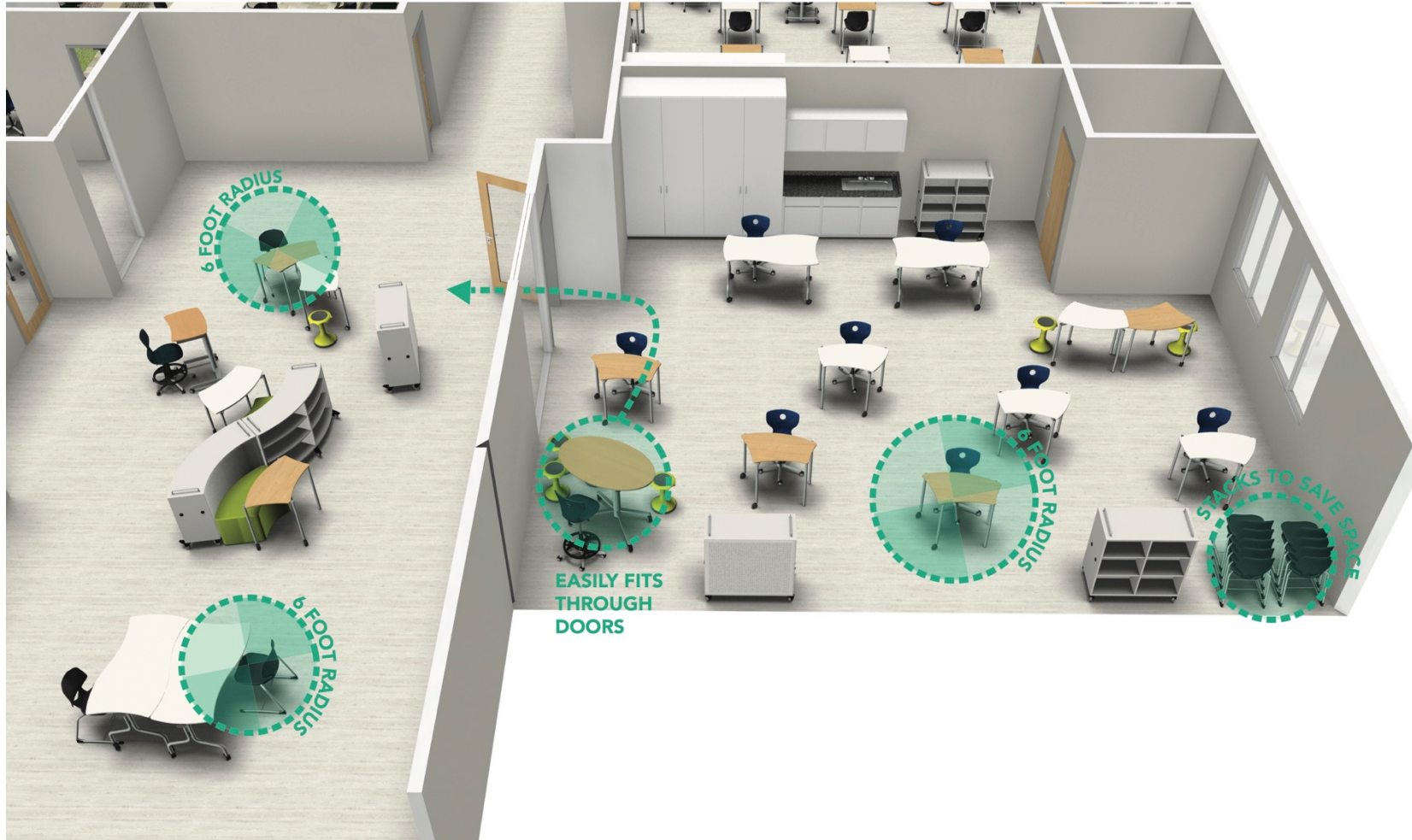


SHIFT+ TRANSFER TEACH
Quantity: 1



SHIFT+ LANDSCAPE
Quantity: 3

CLASSROOM 4 WITH DISTANCING



PHYSICAL DISTANCING



CLEANABLE

PantoMove-LuPo comes standard with a piggy back hook so you can suspend it on tables for easy cleaning.



STACKING

Shift+ ThumbPrint can be stacked up to 6 tables high.



MOBILE

Shift+ Interact easily moves around the room and fits through doors.



FLIPPABLE

FusionFlip can be flipped and nested to save space and to easily fit through doors.

CLASSROOM 4: COLLABORATIVE

Layout Option B



COLLABORATIVE

Layout samples shown are for approximately 20-25 students in a 750-800 square foot classroom.



JUMPER AIR ACTIVE
Quantity: 12



PANTOMOVE
Quantity: 8



PANTOMOVE-PLUS
Quantity: 1



HOKKI
Quantity: 6



SHIFT+ THUMBPRINT
Quantity: 12



RONDOLIFT-KF
Quantity: 1



SHIFT+ FUSIONFLIP
Quantity: 4



SHIFT+ TRANSFER STRAIGHT 2-SIDED
Quantity: 2



SHIFT+ TRANSFER 60°
Quantity: 2



SHIFT+ TRANSFER TEACH
Quantity: 1



SHIFT+ LANDSCAPE
Quantity: 3

CLASSROOM 4 WITH DISTANCING



PHYSICAL DISTANCING

*Please note: furniture not graded for outdoor use, this is a temporary solution only.



CLEANABLE

PantoMove-LuPo comes standard with a piggy back hook so you can suspend it on tables for easy cleaning.



STACKING

Shift+ ThumbPrint can be stacked up to 6 tables high.



MOBILE

Shift+ Interact easily moves around the room and fits through doors.



FLIPPABLE

FusionFlip can be flipped and nested to save space and to easily fit through doors.

SEE IT IN ACTION

Watch a short video showing the layouts from previous pages change from typical to distancing layouts: <https://www.youtube.com/watch?v=BNhZ1-LwaPE>.



CONTACT



Need support with how to rearrange your classrooms to allow for physical distancing?

Need more information about VS America's furniture solutions?

We're happy to help!

Contact VS America

info@vsamerica.com

704-378-6500

www.vsamerica.com